

AMI UEFI BIOS Flash SOP for SHELL

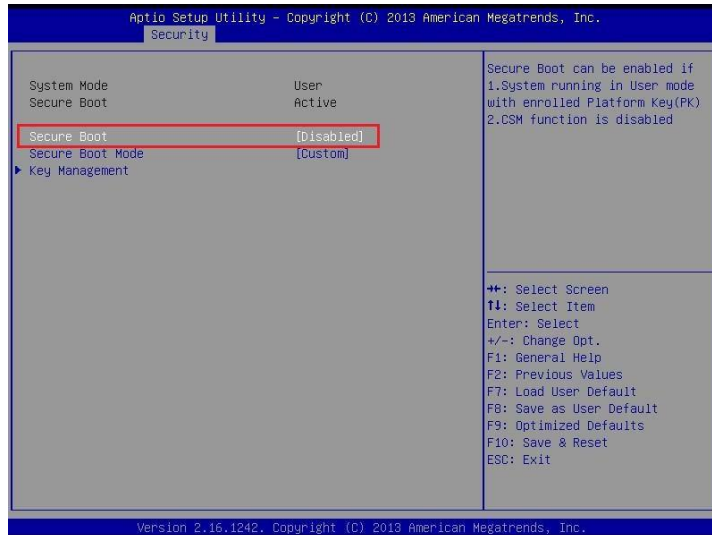
Document Revision: v1.0

Issue Date: 2018/07/12

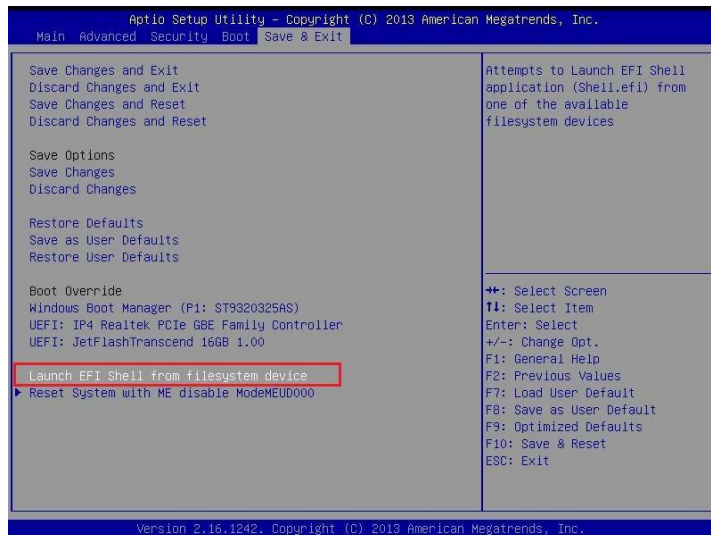
Author: Helena Zeng

Flash UEFI BIOS SOP for SHELL

1. Copy all the files under Service folder to the root of a USB thumb drive
2. Insert USB thumb drive to target machine
3. Press [**DEL**] to boot to Setup Utility
4. In Security page, enter Secure Boot menu to Disable Secure Boot



5. Press [**F10**] to save and reset Setup then boot to Setup Utility again
6. In Save & Exit page, Select [**Launch EFI Shell from file system device**]



7. Find Alias name of USB thumb drive in SHELL mode, you could press Page Up if too many Alias, it is fs1 in this case.
8. Input **fs1**: in SHELL mode, will enter USB thumb drive
9. Run **FLAH.NSH** or **FLASH_M** will enter the directory where the tool locate and update bios. Update command:

AFUEFIX64.EFI BIOS_FILE_NAME /P /N /R /CAPSULE

```

blk2 :HardDisk - Alias (null)
      PciRoot(0x0)/Pci(0x12,0x0)/Sata(0x0,0xFFFF,0x0)/HD(2,GPT,6315DD5F-40
6340,0x32800,0x8000)
blk3 :HardDisk - Alias (null)
      PciRoot(0x0)/Pci(0x12,0x0)/Sata(0x0,0xFFFF,0x0)/HD(3,GPT,93C85721-58
518A,0x3AB00,0xA000000)
blk4 :HardDisk - Alias (null)
      PciRoot(0x0)/Pci(0x12,0x0)/Sata(0x0,0xFFFF,0x0)/HD(4,GPT,8B8B2CF1-620
CB2B,0xA03A800,0x4E41800)
blk5 :BlockDevice - Alias (null)
      PciRoot(0x0)/Pci(0x12,0x0)/Sata(0x0,0xFFFF,0x0)
blk6 :Removable BlockDevice - Alias (null)
      PciRoot(0x0)/Pci(0x15,0x0)/USB(0x7,0x0)

Press ESC in 5 seconds to skip startup.nsh, any other key to continue.
Shell>
Shell> fs1:

fs1:\> cd "Panda2151_GLK D02 (20180711)"\Normal\EFI

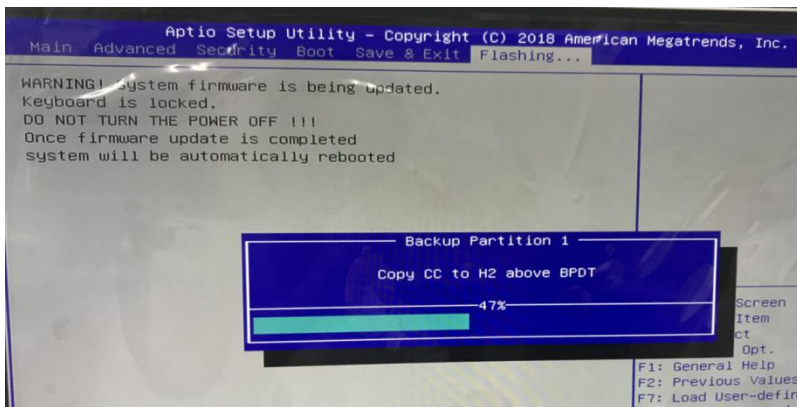
fs1:\Panda2151_GLK D02 (20180711)\Normal\EFI> FLASH.nsh
FLASH.nsh> AfuEfix64 ..\ROM\215GS-D02.bin /P /N /R /capsule

+-----+
|          AMI Firmware Update Utility  v5.09.04.1503          |
|          APL FaultTolerance Mode                             |
|          Copyright (C)2017 American Megatrends Inc. All Rights Reserved. |
+-----+
Reading flash ..... done
- FFS checksums ..... ok
Loading capsule to secure memory buffer ... done
System is going to shut down, are you ready? (Y/N)....

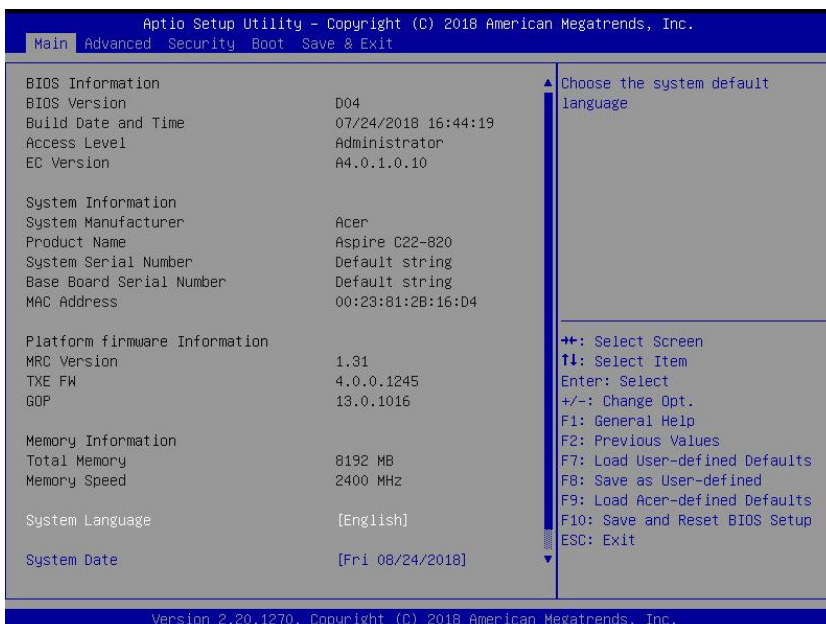
```

10. Input Y "when prompting System is going to Shut down, are you ready?", machine will reboot.

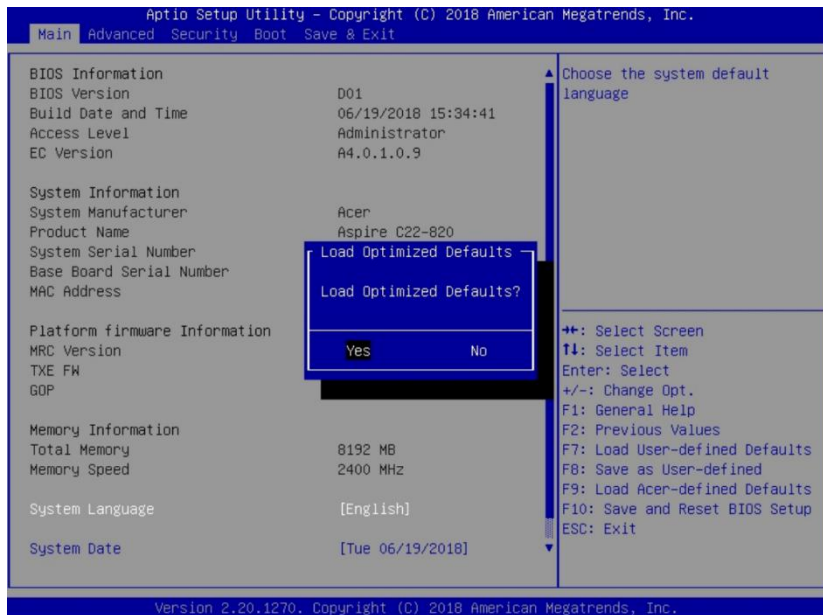
11. After rebooting, system will enter flashing interface and update BIOS automatically.



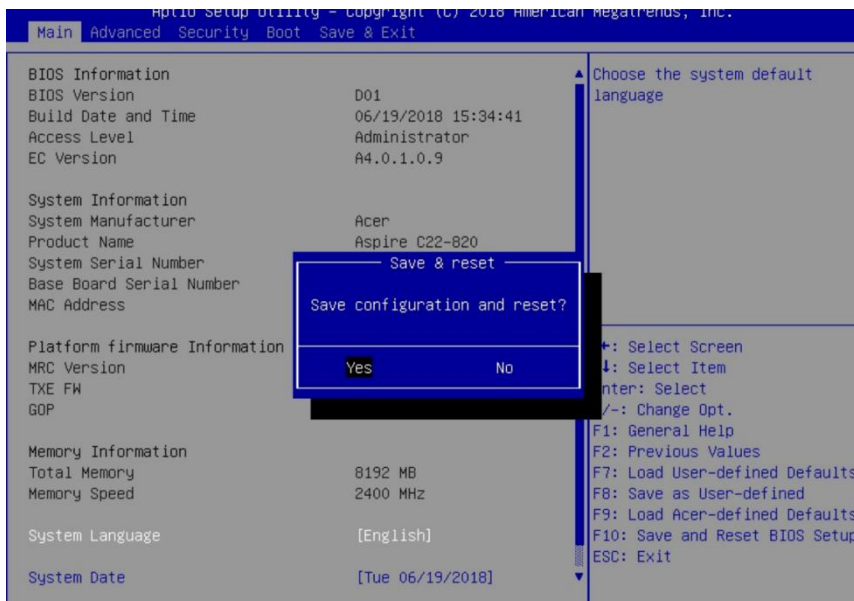
12. System will reboot automatically after finishing updating. When system rebooting, please press **[Del]** key to enter Setup Utility to check BIOS version.



13. Press **[F9]** key to Load Optimized Default setting.
14. Select "Yes" and press **[Enter]** key.



15. Press **[F10]** to save configuration and reset.
16. Select "Yes" and Press **[Enter]** key.



17. BIOS updating is finished.